

education works.



Organizational Chart

[About ACCS](#)

[Home](#) > [Organizational Chart](#)

[State Board of Education](#)

[Department of Postsecondary Education](#)

[Colleges and Programs](#)

[Higher Ed Transfer](#)

[GED](#)

[Veterans Services](#)

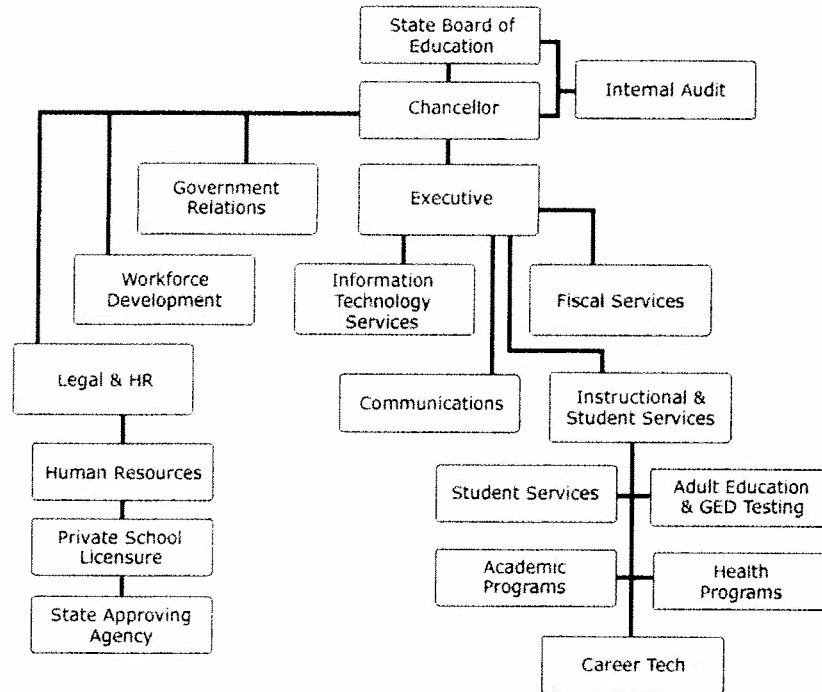
[Private School Licensure](#)

[Employment Opportunities](#)

[Employees Only : Login](#)

[Contracts/RFPs/RFBs](#)

[Contact Us](#)



[Organizational Chart - DPE Personnel, 04-04-12 \(PDF\)](#)

[About ACCS](#) | [Colleges & Programs](#) | [Department of Postsecondary Education](#) | [State Board of Education](#) | [GED](#) | [Veterans Services](#) | [Private School Licensure](#) | [Employment Opportunities](#) | [Employees Only](#) | [Request For Proposal](#)

© 2008 Alabama Community College System