

Institutional Effectiveness Measure 6

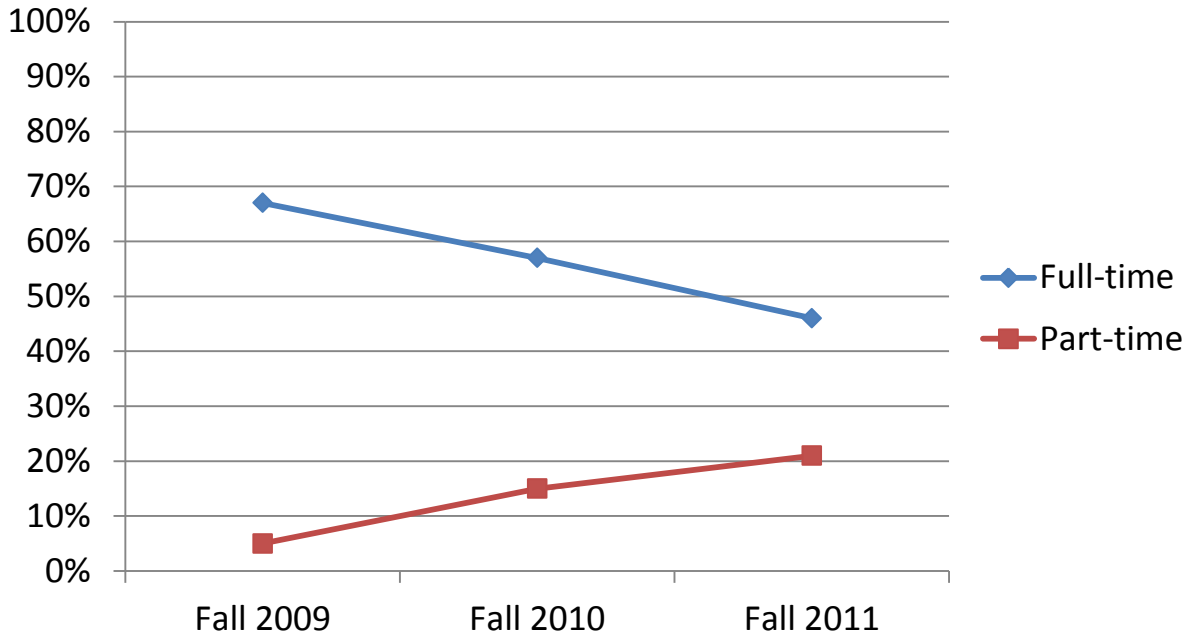
RETENTION RATES (FULL AND PART-TIME)

Benchmark: To meet or exceed the average retention rates of 2 year Alabama colleges for both full and part-time students (50%, 5%, respectively).

Retention Rate for Fall 2010-Fall 2011	Benchmark*	Comparison Indicator
46% F/T	50%	↓
21% P/T	5%	↑

Source: IPEDS
*ACHE

CVCC 3 Year Trend for Full-time and Part-time Retention



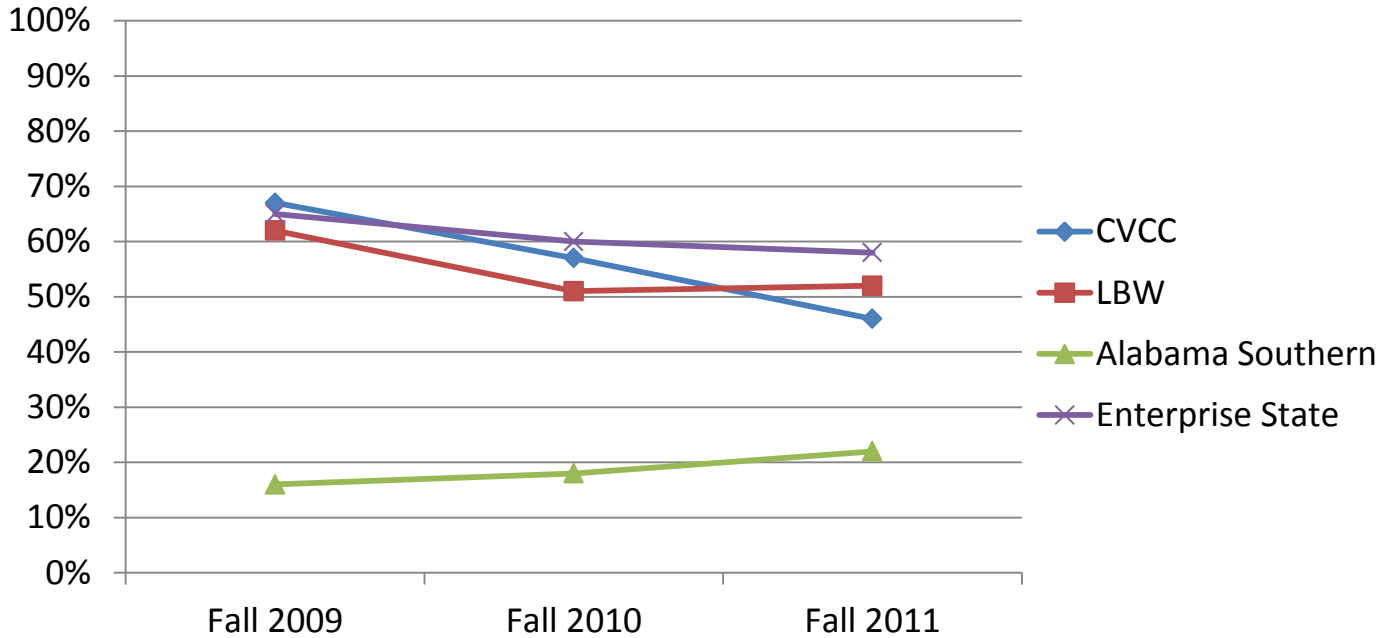
Source: IPEDS

Improvements: Improvements in retention rates are reflected in online unit plans.

Specific improvements include:

- Implemented ORI105 course, specifically focused on retention
- Nursing has implemented a remediation policy for students scoring below 75% on any unit exam

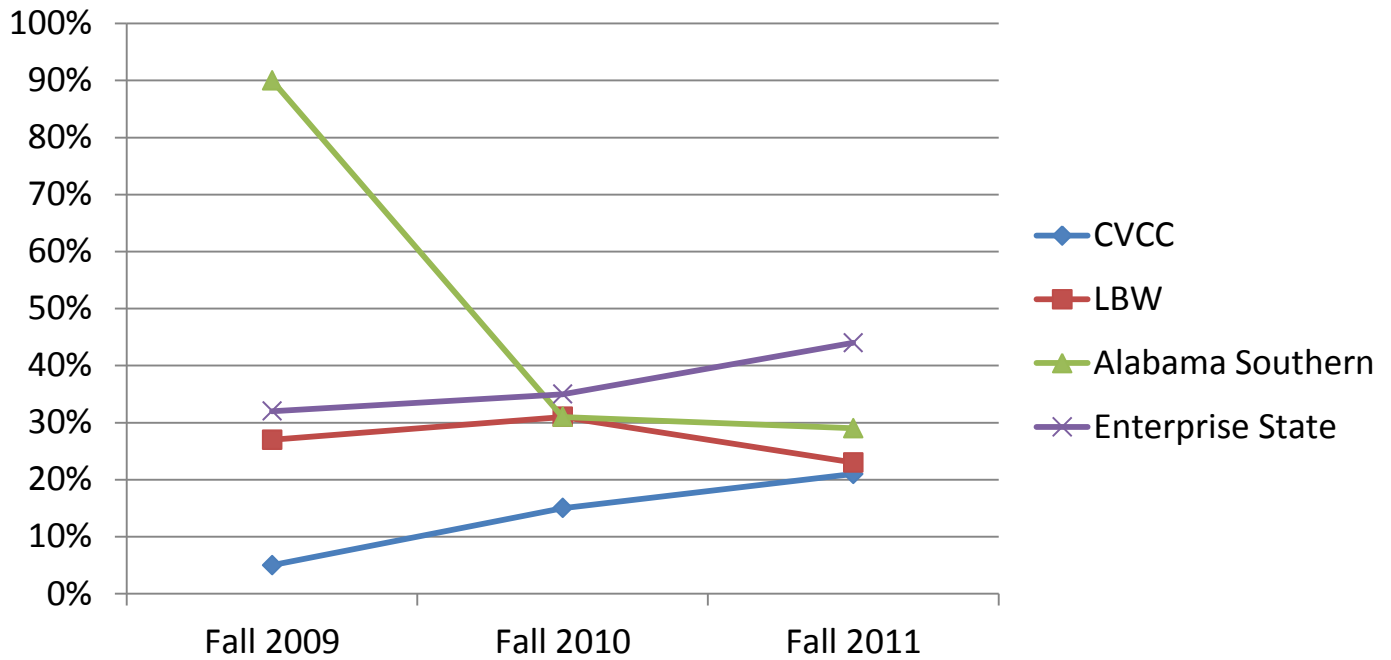
3 Year Trend for Full-time Retention Peer Group Comparison



	Fall 2009	Fall 2010	Fall 2011
CVCC	67%	57%	46%
LBW	62%	51%	52%
Alabama Southern	16%	18%	22%
Enterprise State	65%	60%	58%

Source: IPEDS Institutional Profile, Data Feedback Reports

3 Year Trend for Part-time Retention Peer Group Comparison



	Fall 2009	Fall 2010	Fall 2011
CVCC	5%	15%	21%
LBW	27%	31%	23%
Alabama Southern	90%	31%	29%
Enterprise State	32%	35%	44%

Source: IPEDS Institutional Profile, Data Feedback Reports